



Summer 2023

# International Academic Credential Evaluation

CIC-News Webinar

August 3, 2023

Institutional Relations

# Agenda

- I. About WES
- II. Credential Recognition
- III. WES Evaluation Services
- IV. WES Application Process
- V. WES Resources and Tools

# About WES

## Part I



## Our Mission

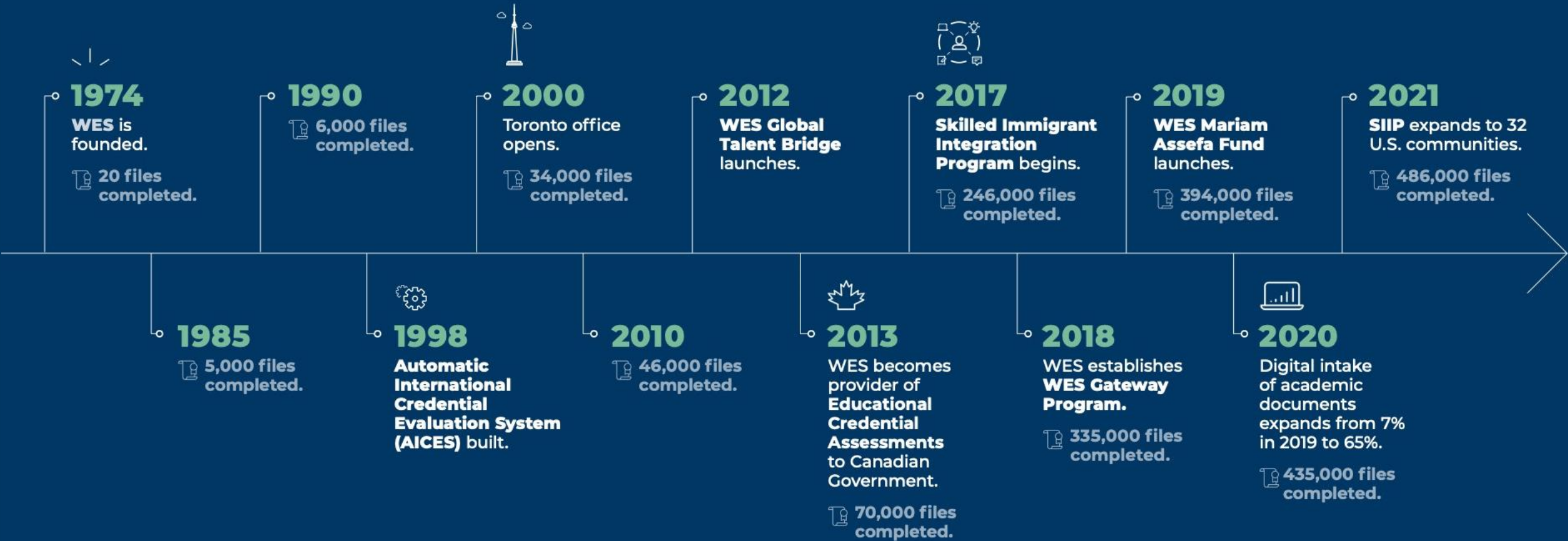
We help people **learn, work, and thrive** in new places. We help society **recognize the value** of people's education and experience.



## Our Vision

**Everyone** is able to put their education, experience, and skills to work **anywhere** in the world.

# Nearly 50 Years of Experience and Expertise



# World Education Services (WES)



**1974**

- Started in 1974
- In Canada since 2000



**121**

121 staff in Canada



**348,000+**

In 2022, served more than 348,000 applicants in Canada

# Top 10 Countries of Education

2022 WES Applicants



India



Philippines



Nigeria



United Kingdom



United States



Hong Kong



Pakistan



Iran



China



Cameroon

# WES Credential Evaluation Reports Are Used By:



Professional Licensing Bodies



Universities, Colleges, and  
Apprenticeship Training Programs



Employers



Immigration, Refugees and  
Citizenship Canada (IRCC)



# Credential Recognition

## Part II

## Who May Need a Credential Evaluation?

Individuals with international education who are considering:

- Licensing in their occupation or profession
- Attending a post-secondary institution
- Employment opportunities
- Immigrating to Canada

# Immigration

## Immigration Offices

- Required for most Express Entry applicants
- WES is a designated provider of Educational Credential Assessments (ECAs) for IRCC

# WES Evaluation Services

## Part III



The Educational Credential Assessment (ECA) verifies your education background for Canadian immigration purposes.

## Educational Credential Assessment for Citizenship and Immigration Canada

Name: SAMPLE, Sample  
Date of Birth: Month 01, 1993

Date: September 29, 2017  
Ref #:  
Page: 1 of 1

### CANADIAN EQUIVALENCY SUMMARY

Bachelor's degree (four years)

This report highlights the equivalency of your credential.

### CREDENTIAL ANALYSIS

- Name On Credential:** Sample Sample  
**Credential Authentication:** Official transcripts were sent directly by the institution  
**Country:** India  
**Credential:** Bachelor of Engineering  
**Year:** 2014  
**Awarded by:** Anna University  
**Status:** Recognized Institution  
**Major/Specialization:** Mechanical Engineering

**Canadian Equivalency:** Bachelor's degree (four years)

This report identifies and describes each credential, including: name of the credential, requirements for entry and program length, and the equivalent in terms of Canadian education.

# WES ECA Sample

# ECA Fee and Turnaround Time



Your evaluation will be completed in 30 business days after receipt, review, and approval of all documents, and payment in full.

Services	Educational Credential Assessment (ECA)
Electronic ECA report provided to you	✓
An official paper report (delivery fees apply)	✓
ECA report access by IRCC	✓
Electronic storage of your report and verified transcripts for future use	✓
Price	C\$240*

\*Price does not include delivery fees, additional fees, or a 13% Harmonized Sales Tax (HST).

# Upgrade Your IRCC-ECA to WES Standard Evaluation Reports



## Step 1

Go to My Account



## Step 2

Upgrade ECA to meet the requirements of:

- Professional Licensing Bodies
- Academic Institutions
- Employers



## Step 3

Upgrade to Document-by-Document (DxD) or Course-by-Course (CxC)



## Step 4

Select the recipient

# WES Services and Fees

Services	Fees
Upgrade ECA to DxD	C\$52
Upgrade ECA to CxC	C\$104
Upgrade Standard DxD to CxC	C\$104



# WES Application Process

## Part IV

## Required Documents

Preview the list of documents required by WES from you and your institution to start your credential evaluation.

### Your Education

Please provide the information below to receive your document requirements.

All fields are required.

Equivalency Country ?

U.S.	Canada
------	--------

Country of Education

Status of your Education

Type of Education

Name of the Institution

Name of Diploma/Certificate

[View Requirements](#)

# Overview of Evaluation Process



## Step 1

Applicant creates account and receives a WES reference number



## Step 2

Applicant refers to required documents resources; asks awarding institution to send documents directly to WES (by mail or via digital transmission)



## Step 3

We verify the credentials, create a report, and deliver it to specified recipients

# Selecting Additional Recipients

## ▼ Ontario Immigrant Nominee Program, MCIIT

### Ministry of Citizenship, Immigration, & Intl Trade

Ground Floor, 400 University Avenue

Toronto, ON M7A 2R9

**Delivery Method:** Electronic Delivery

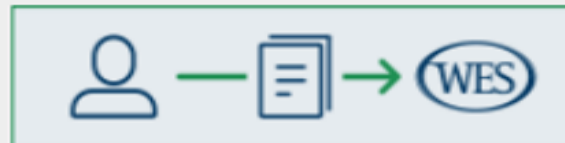
- Chandigarh Immigration Services Inc.
- Chen Immigration Law Associated
- CILA Immigration
- Civis Immigration Consultant
- Commission de la Construction du Quebec
- ConnectingEdge Immigration
- Consulate General of Canada in Hong Kong
- Consulate General of Canada to Vietnam

# Upload Your Degree Certificate/Translation in My Account

## 1. Degree Certificate

For example: Lisans Diploması, Yüksek Lisans Diploması, Doktora Diploması

**What you need  
to do:**

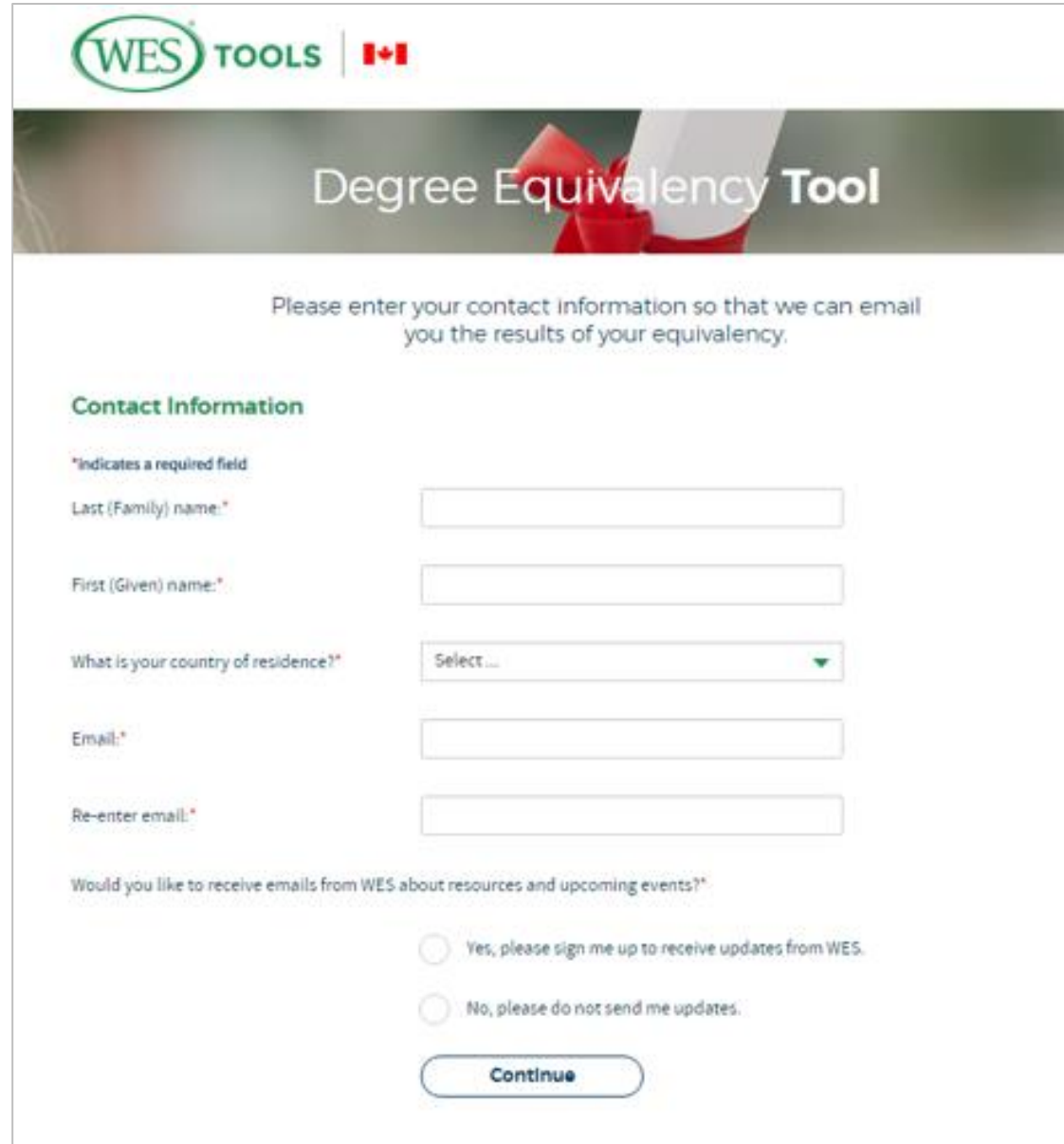


You can upload a clear and legible copy of this document in [My Account](#).


# WES Resources and Tools

## Part V

# Degree Equivalency Tool



The screenshot shows the registration page for the WES Tools Degree Equivalency Tool. At the top left is the WES TOOLS logo with a Canadian flag. The main heading is 'Degree Equivalency Tool' with a background image of a red ribbon on a white envelope. Below the heading is a message: 'Please enter your contact information so that we can email you the results of your equivalency.' The form is titled 'Contact Information' and includes a legend: '\*Indicates a required field'. The fields are: 'Last (Family) name:\*' (text input), 'First (Given) name:\*' (text input), 'What is your country of residence?\*' (dropdown menu with 'Select ...' and a downward arrow), 'Email:\*' (text input), and 'Re-enter email:\*' (text input). At the bottom, there is a question: 'Would you like to receive emails from WES about resources and upcoming events?\*' with two radio button options: 'Yes, please sign me up to receive updates from WES.' and 'No, please do not send me updates.' A 'Continue' button is located at the bottom right of the form.

**WES TOOLS** | 

## Degree Equivalency Tool

Please enter your contact information so that we can email you the results of your equivalency.

### Contact Information

\*Indicates a required field

Last (Family) name:\*

First (Given) name:\*

What is your country of residence?\*

Email:\*

Re-enter email:\*

Would you like to receive emails from WES about resources and upcoming events?\*

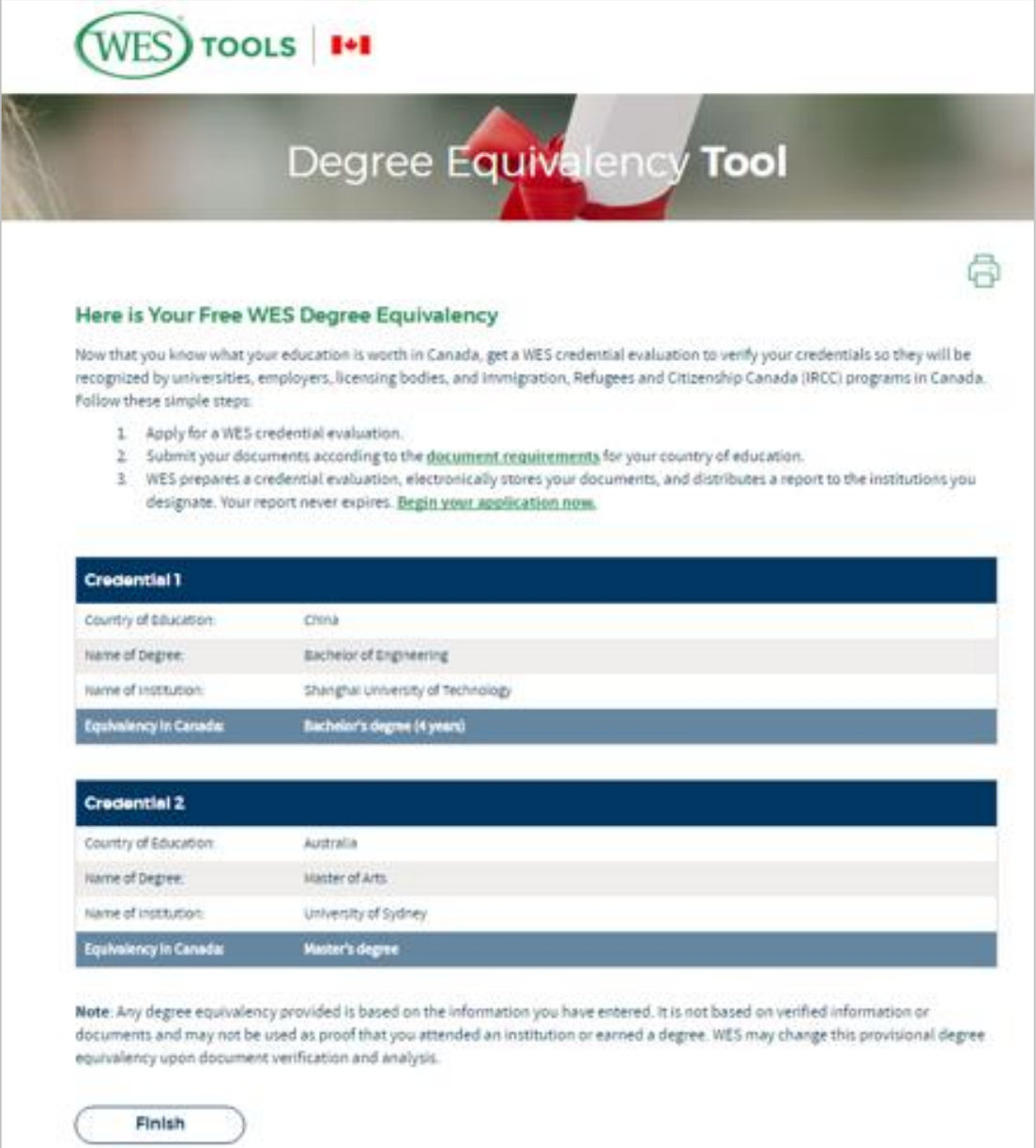
Yes, please sign me up to receive updates from WES.

No, please do not send me updates.

[Continue](#)

# Degree Equivalency Tool

## Sample Outcome



The screenshot displays the WES Degree Equivalency Tool interface. At the top, the WES TOOLS logo and a Canadian flag are visible. The main heading is "Degree Equivalency Tool". Below this, a green heading reads "Here is Your Free WES Degree Equivalency". A paragraph explains that users can get a WES credential evaluation to verify their credentials for recognition in Canada. Three steps are listed: 1. Apply for a WES credential evaluation, 2. Submit documents according to requirements, and 3. WES prepares and distributes a report. Below the steps are two tables showing sample outcomes for "Credential 1" and "Credential 2".

**Credential 1**

Country of Education:	China
Name of Degree:	Bachelor of Engineering
Name of Institution:	Shanghai University of Technology
Equivalency in Canada:	Bachelor's degree (4 year)

**Credential 2**

Country of Education:	Australia
Name of Degree:	Master of Arts
Name of Institution:	University of Sydney
Equivalency in Canada:	Master's degree

**Note:** Any degree equivalency provided is based on the information you have entered. It is not based on verified information or documents and may not be used as proof that you attended an institution or earned a degree. WES may change this provisional degree equivalency upon document verification and analysis.

**Finish**



# WES Free Tools and Resources

## Degree Equivalency

See how your  
credentials compare to  
Canadian standards  
instantly

[applications.wes.org/ca/degree-equivalency-tool/](https://applications.wes.org/ca/degree-equivalency-tool/)

## WES Advisor Blog

Trusted advice for  
academic and  
professional success

[wes.org/ca/advisor-blog](https://wes.org/ca/advisor-blog)

## WES Advisor Newsletter

Monthly email with  
helpful articles

[wes.org/ca/subscribe](https://wes.org/ca/subscribe)

## Contact WES

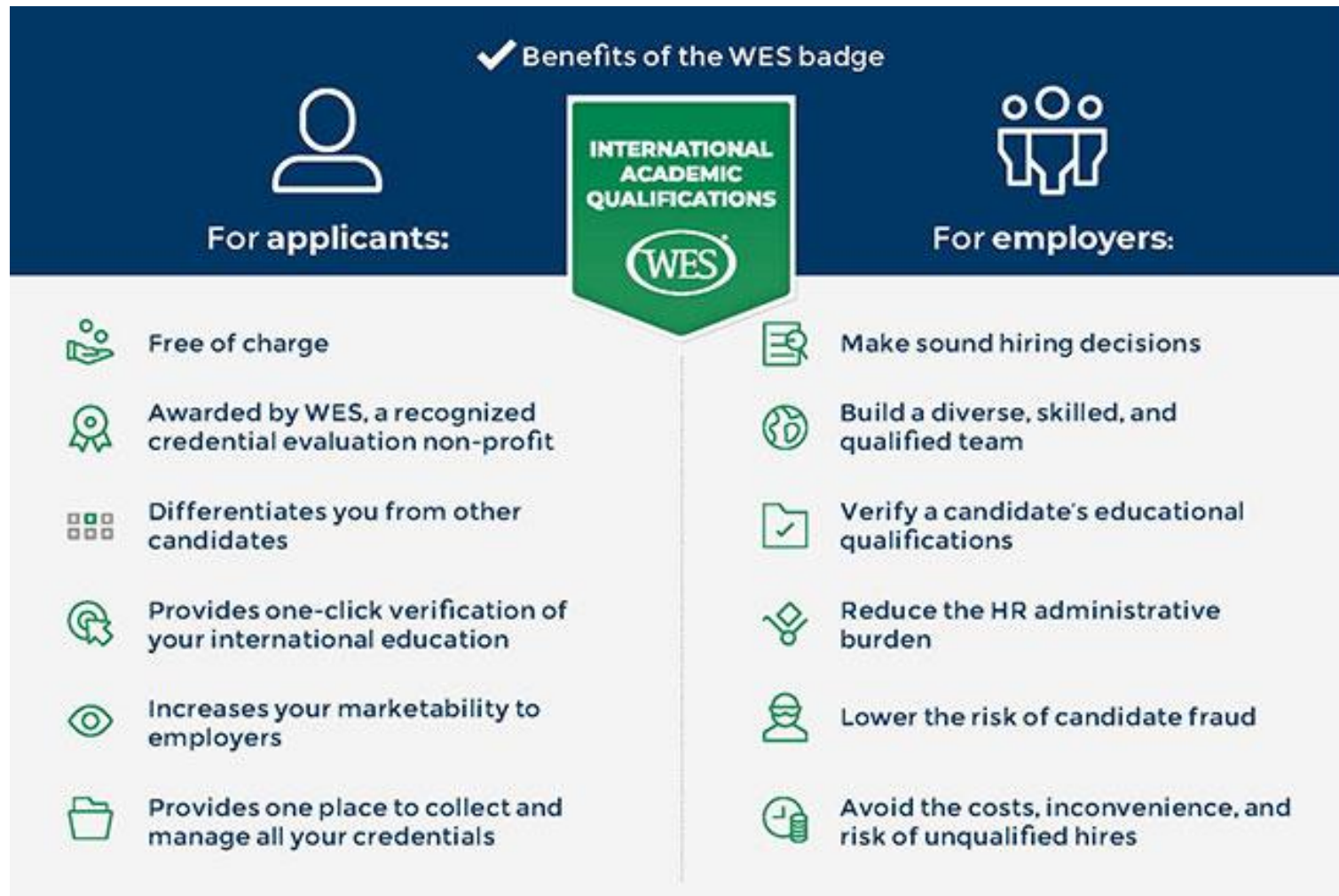
Canada (+1) 800-361-6106

<https://www.wes.org/ca/contact-us/>

## My Account

- Order status
- Payment
- Track package
- Modify order
- Edit profile
- Upgrade order

# WES Digital Badges



# Questions and Comments

Need more information?

Visit: [wes.org/ca/credential-evaluations/](https://wes.org/ca/credential-evaluations/)

